

358 800 €

Contemporary house for sale

7 rooms

Surface : 160 m²

Surface of the living space : 48 m²

Surface terrain : 263 m²

Année construction : 2006

Exposition : est ouest

Eau chaude : Electrique

Indoor condition : good

Outdoor condition : good

Prestations :

electric shutters, Bedroom on ground floor, double glazing, house architect and ..., suite, calm

5 bedroom

1 terrace

1 bathroom

1 shower

2 WC

1 garage

Classe énergie (dpe ancienne version) : D

Emission de gaz à effet de serre (ges ancienne version) : B

Document non contractuel

28/04/2024 - Prix T.T.C



Contemporary house réf. 389V734M Dinan

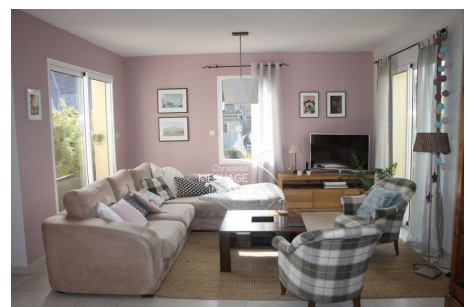
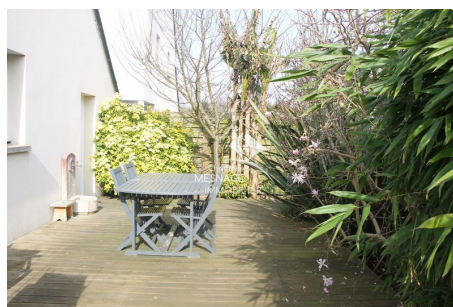
Dinan city center, architect-designed house with an entrance hall, a kitchen open to the living room with access to the terrace, 5 bedrooms including 1 suite with bathroom on the ground floor and 1 with dressing room upstairs, a bathroom equipped, 1 dressing room, utility room, garage with laundry part. all on a 263m² of garden. bright, not overlooked, quiet.

ecd of energy consumption 173.51 kWh / m² per year. ref.389v734m

find all our ads on the website www.christellemesnage.com (houses, flats and land) for sale on Dinan and common léhon nearby quévert, lanvally, taden, Trelivan, plouer on rance

Frais et charges :

358 800 € honoraires d'agence 3,85% à la charge de l'acheteur inclus



Christelle Mesnage Immobilier - 14 Rue de la Ferronnerie - 22100 Dinan

Tel : 02.96.88.00.01 ou portable : 06.80.01.43.12.

contact@christellemesnage.com - www.christellemesnage.com - Document non contractuel