

353 600 €

Immeuble occupational

Surface : 221 m²

Exposure : Est ouest

Cover : slate

Benefits :

Immeuble indépendant



Immeuble ref. 389P12V Dinan

HENANBIHEN- Beautiful investment building comprising 6 rented accommodations:

On the ground floor: 2 studios of 47m² each, rented for €450/month, on the 1st floor: 3 studios including 1 of 20m² and 1 of 25m² rented for €360 and €390 and 1 studio of 16m² to renovate (not rented), on the 2nd floor : a 66m² T3 rented for €500. Individual heating, mains drainage.

Virgin DPE and GHG

Ref:389V324A

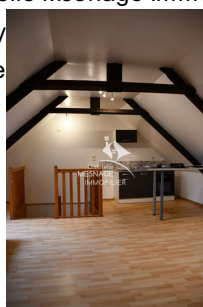
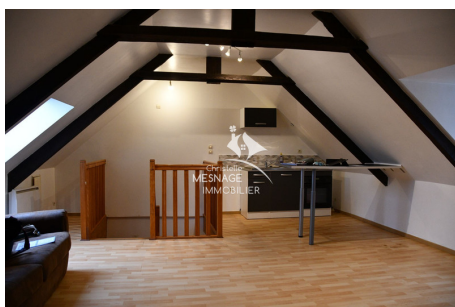
Information on the risks to which this property is exposed is available on the website www.georiques.gouv.fr

Find all our real estate advertisements on the website www.christellemesnage.com.

A dynamic and professional agency that responds to all your requests for the sale of houses, apartments, land in the DINAN region or for any rentals.

The Christelle Mesnage Immobilier agency welcomes you from Monday afternoon to Saturday for real estate projects in the region.
Contact the agency on 02.96.88.00.01

Document non contractuel
20/05/2024 - Prix T.T.C



Christelle Mesnage Immobilier - 14 Rue de la Ferronnerie - 22100 Dinan

Tel : 02.96.88.00.01 ou portable : 06.80.01.43.12.

contact@christellemesnage.com - www.christellemesnage.com - Document non contractuel